

Using the S750 as a modem

This manual explains how to configure your S750 as a modem for use with your PC.

Configurations for USB modem described below are true of Bluetooth modem.

Note: Depending on your operating system, some of the instructions and screens displayed on your PC may be different.

Before getting started:

Make sure you have already installed the S750 driver included on the CD-ROM that came with your S750 and obtained the Internet access information such as user names, passwords and so on from Orange (indicated in Table 1 for the UK and France only), your operator, or ISP (Internet Service Providers).

1. Turn on your PC and the S750.

Note: Enter your USIM/SIM Pin code when prompted.

2. Connect the USB cable to the S750 and the USB port on your PC.

Confirming/Changing the setting of your phone to 3G or 2G



at the top right of the screen indicates you are in 3G coverage.



at the top right of the screen indicates you are in 2G coverage.

1. Press [Menu].
2. Highlight the icon [Settings].
3. Select [Phone Settings] and press OK.
4. Select [Select Network] and press OK.
5. Select [Select Network] and press OK.
6. Press OK.
7. Select **UMTS/GSM Dual** to use the 3G (UMTS) network in the UK or France. Select **GSM Only** if you want to use the 2G (GSM/GPRS) network in France.

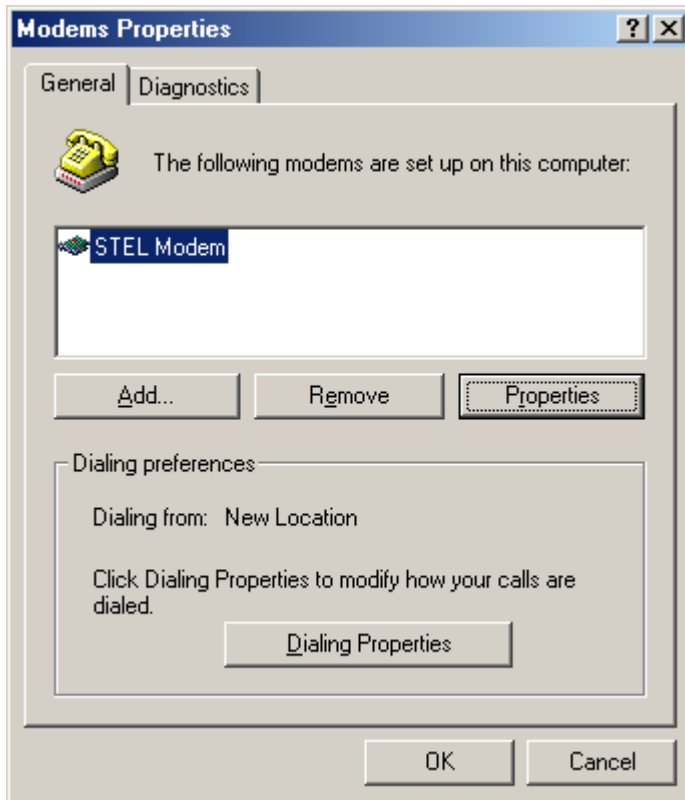
Note: The modem function cannot be used within the 2G(GSM) network in UK.

[Configuring your S750 to function as a modem](#)

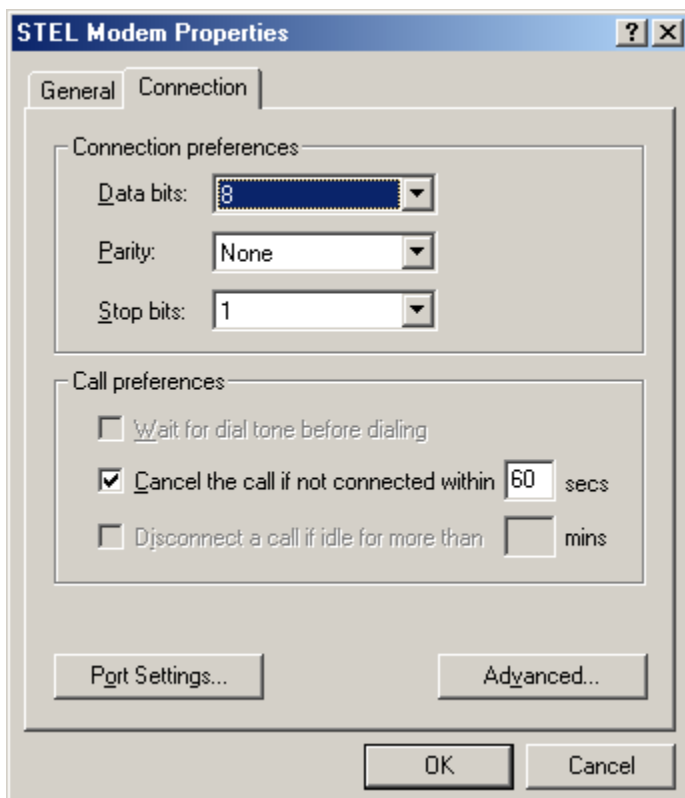
The explanation below is how to use USB cable in use for modem.

When you use Bluetooth, please refer to another manual which shows you how to set up Bluetooth.

1. On your PC, click **Start, Settings**, and then **Control Panel**.
2. Double-click the **Modems** icon.
3. The **Modems Properties** screen appears. Click **STEL Modem** and then click **Properties**.
(In the case of Bluetooth connection, please choose Bluetooth Modem.)

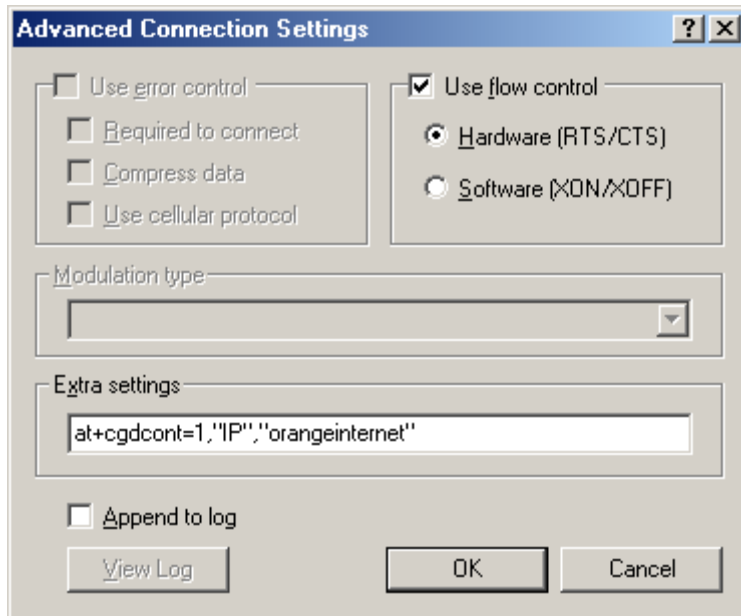


4. The **STEL Modem Properties** screen appears. Click the **Connection** tab and then click **Advanced**.



5. The screen shown below appears. In **Extra settings:**, type the AT command code.

Note: AT command codes are shown in Table 1 at the end of this document.



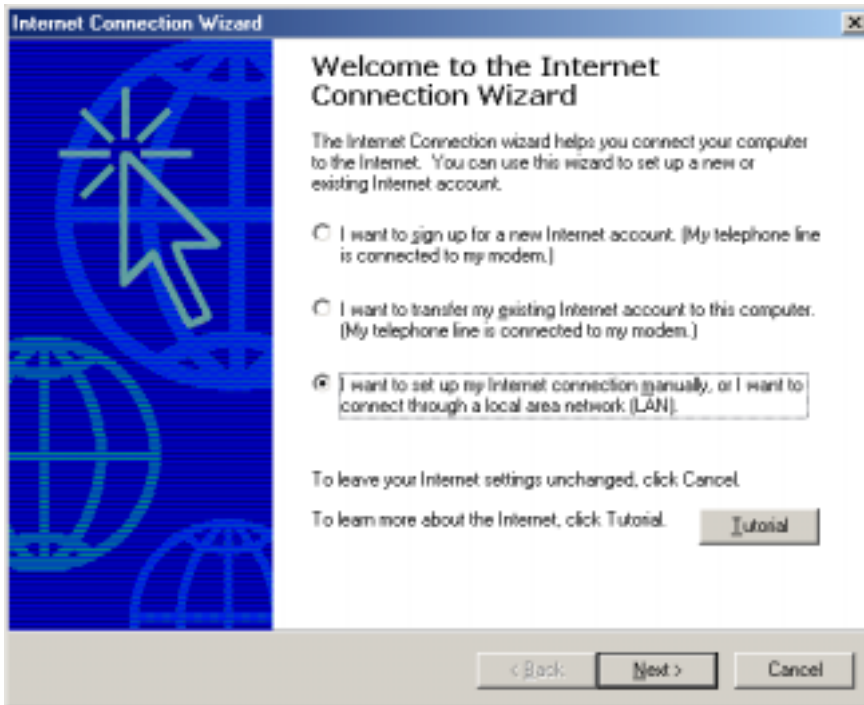
6. Click **OK** to confirm.

7. Click **OK** to close the **STEL Modem Properties** screen.

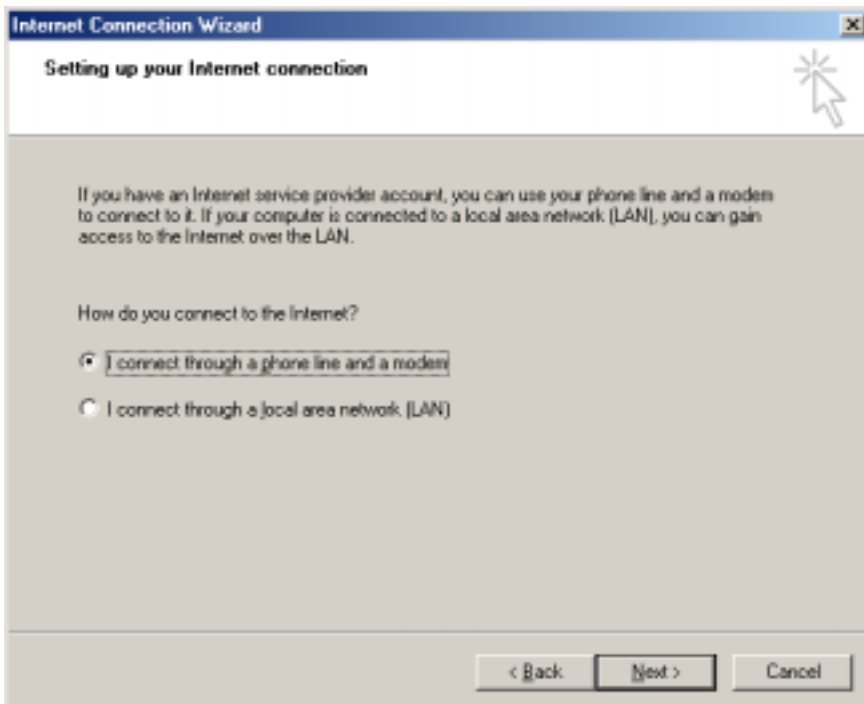
8. Click **OK** to close the “**Modems Properties**” screen.

Configuring your PC's dial-up settings

1. Open **Control Panel** and double-click the **Internet Options** icon.
2. The **Internet Properties** screen appears. Click the **Connections** tab and then click **Setup**.
3. The **Internet Connection Wizard** screen appears. Click **I want to set up my Internet connection manually, or I want to connect through a local area network [LAN]**, and then click **Next**.

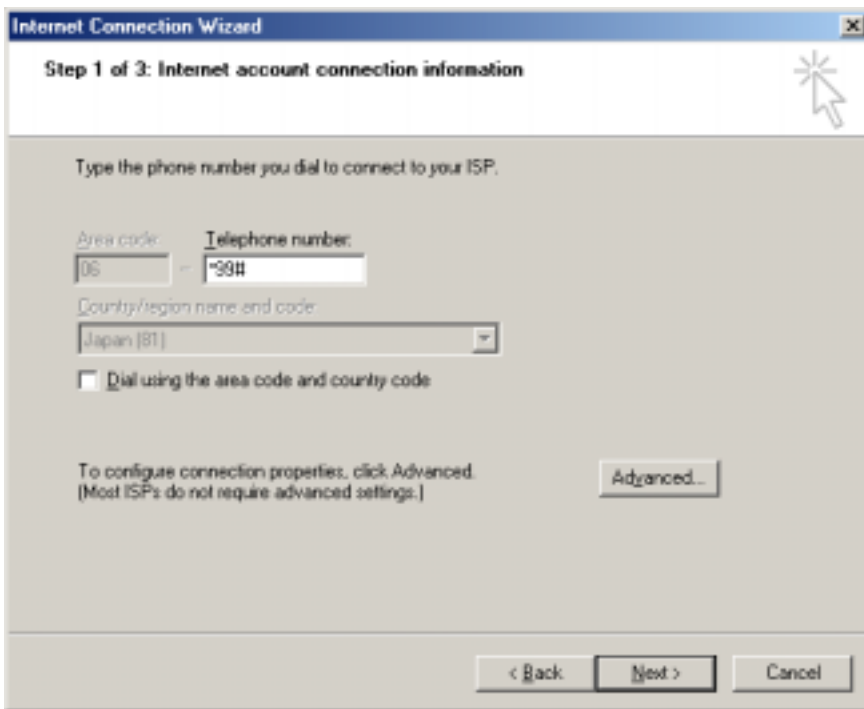


4. The screen shown below appears. Click **I connect through a phone line and a mode** and then click **Next**.



5. The screen shown below appears. Click to clear the **Dial using the area code and country code** check box. In **Telephone number:**, type the telephone numbers and then click **Next**.

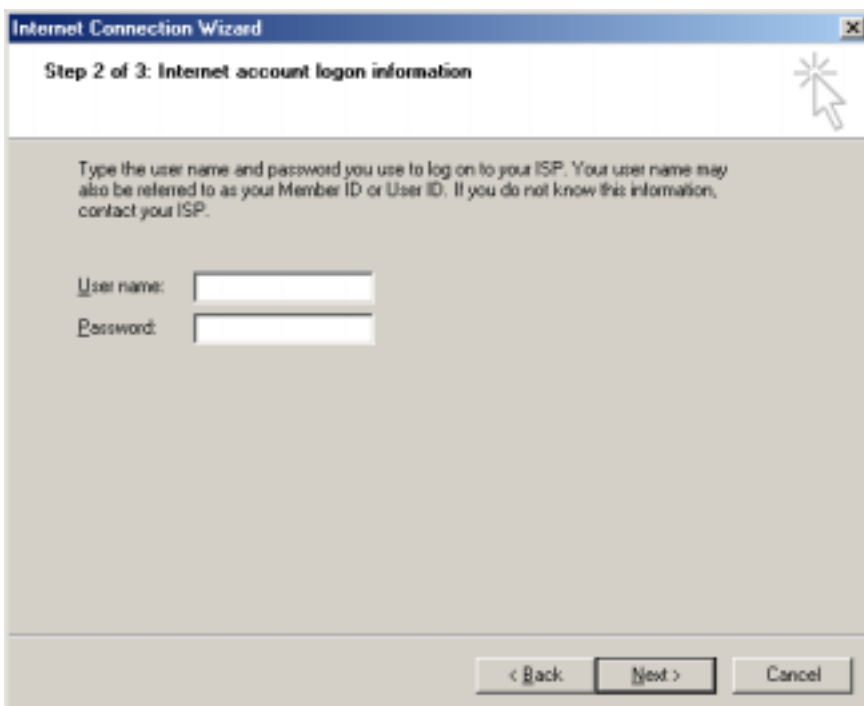
Note: ISP telephone numbers are shown in Table 1 at the end of this document.



The screenshot shows the 'Internet Connection Wizard' window, Step 1 of 3: Internet account connection information. The window title is 'Internet Connection Wizard'. The main heading is 'Step 1 of 3: Internet account connection information'. Below the heading, there is a mouse cursor icon. The main content area contains the following elements:

- Instruction: 'Type the phone number you dial to connect to your ISP.'
- Form fields: 'Area code:' with a dropdown menu showing '06', and 'Telephone number:' with a text box containing '*99#'. There is a small '-' symbol between the two fields.
- Form field: 'Country/region name and code:' with a dropdown menu showing 'Japan (81)'.
- Check box: ' Dial using the area code and country code'.
- Text: 'To configure connection properties, click Advanced. (Most ISPs do not require advanced settings.)' with an 'Advanced...' button.
- Navigation buttons: '< Back', 'Next >', and 'Cancel'.

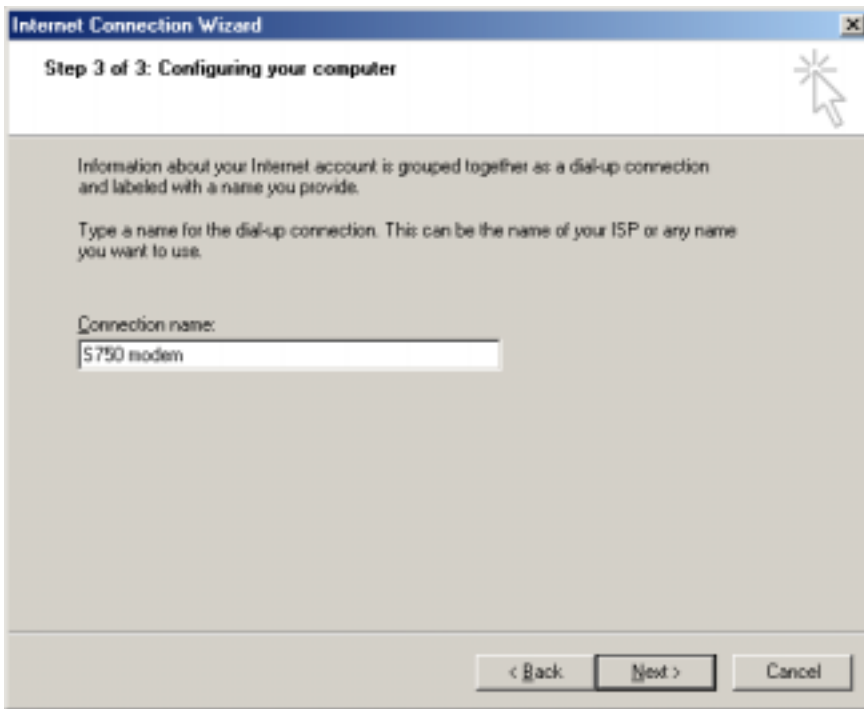
6. The screen shown below appears. In **User name:** and **Password:**, type the information shown in Table 1 and then click **Next**.



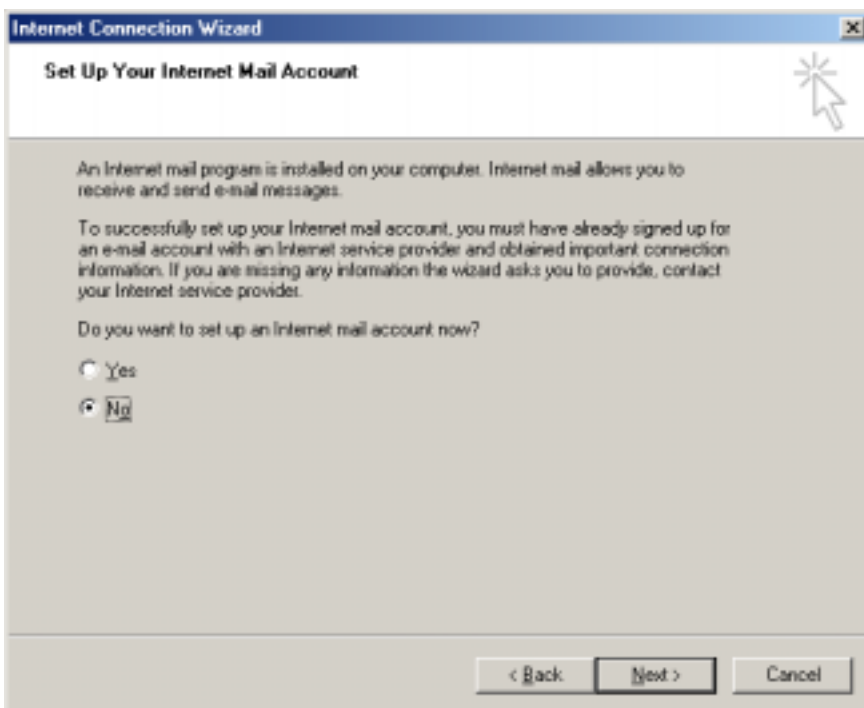
The screenshot shows the 'Internet Connection Wizard' window, Step 2 of 3: Internet account logon information. The window title is 'Internet Connection Wizard'. The main heading is 'Step 2 of 3: Internet account logon information'. Below the heading, there is a mouse cursor icon. The main content area contains the following elements:

- Instruction: 'Type the user name and password you use to log on to your ISP. Your user name may also be referred to as your Member ID or User ID. If you do not know this information, contact your ISP.'
- Form fields: 'User name:' with an empty text box, and 'Password:' with an empty text box.
- Navigation buttons: '< Back', 'Next >', and 'Cancel'.

7. The screen shown below appears. In **Connection name**, type the desired connection name (anything is OK, for example, “S750 modem”), and then click **Next**.

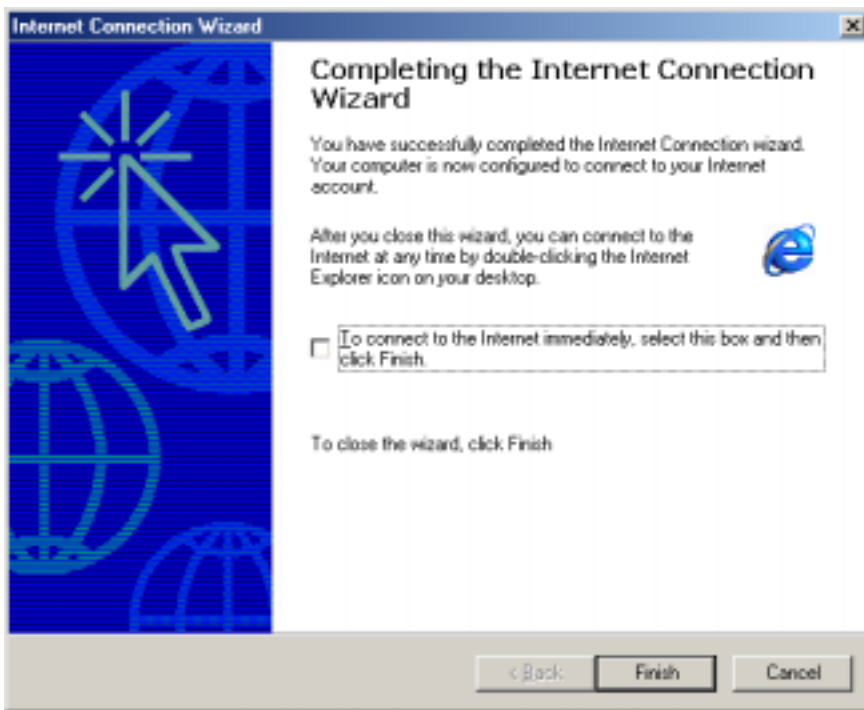


8. The screen shown below appears. Make sure **No** is selected and then click **Next**.



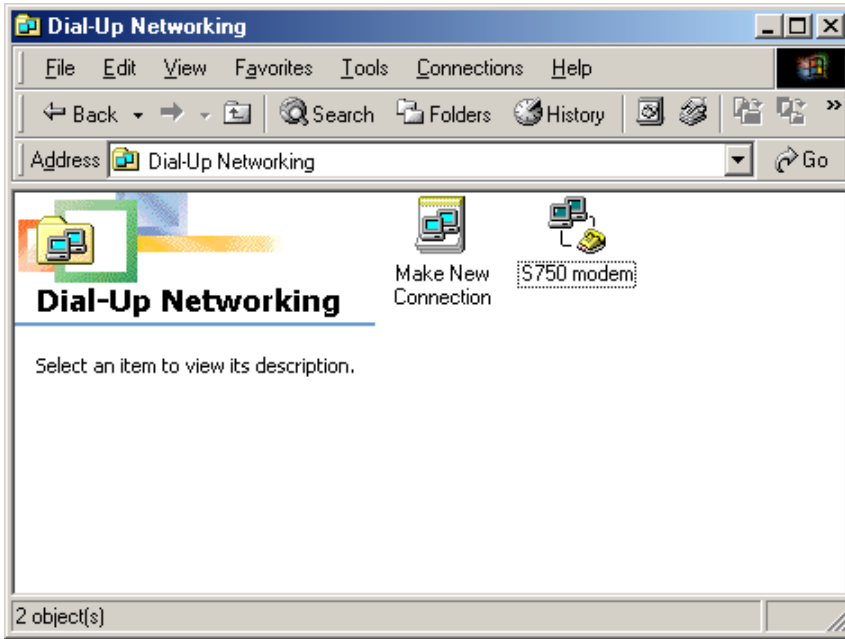
Note: You may be required to setup an e-mail account for the Internet at this point if it is necessary.

9. The screen shown below appears. Click **Finish** to confirm your settings.



Connecting to the Internet

1. Open **Control Panel**, double-click **Dial-Up Networking**, and then double-click the icon with the name you gave for the S750 modem in step 7 of “Configuring your PC’s dial-up settings”.



2. In **User name:** and **Password:**, type the information provided by Orange (indicated in Table 1 for the UK and France only, please type the same username and password that you have already typed during this procedure), your operator, or ISP and then click **Dial** to connect to the Internet.

Table 1: Reference settings

Network name	Orange France UMTS (Packet)/GPRS(Packet)	Orange UK UMTS (Packet)/GPRS(Packet)	Orange France GSM (Circuit Switching)
AT command	at+cgdcont=1,“IP”, “orange”	at+cgdcont=1,“IP”, “orangeinternet”	AT+CBST=71,0,1 or AT+CBST=7,0,0
ISP Telephone number	*99#	*99#	+33 674 501 100 (0033 674 501 100)
User name	Orange	Blank (Do not enter any words)	Orange
Password	Orange	Blank (Do not enter any words)	Orange