

Bluetooth™ Headset Guide

Be sure to read your headset's user guide and confirm your headset's Bluetooth Password (Bluetooth passkey) before performing any operations.

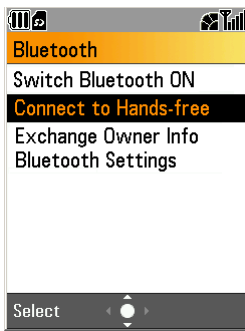
We recommend you to first register the headset you want to use on your S750/S750i so that the connection (searching operation) becomes simpler and eliminates the need for password authentication later on. Once you complete the following registration, you should be able to use your headset right away. (Depends on your headset.)

Registering a Bluetooth headset on your S750/S750i

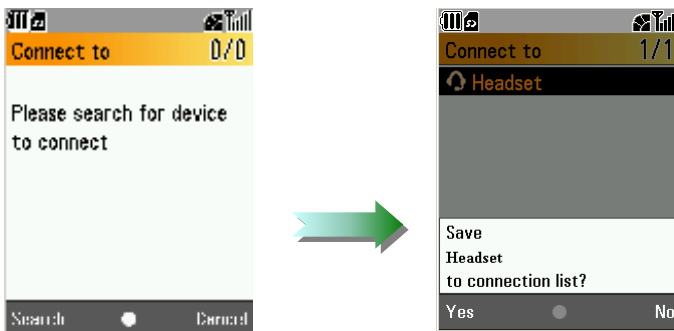
1. Activate the Bluetooth pairing mode on your headset before proceeding.

Note : Read your headset's user guide to activate Bluetooth pairing mode.

2. From your S750/S750i Standby display, press **OK** → **Bluetooth** → **Connect to Hands-free**

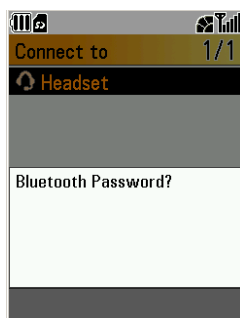


3. Press the left softkey [Search].



- When the headset is searched, a connection list appears on your S750/S750i.

4. Select the headset you want to use from the list and press OK, then [Yes].
5. Enter the Bluetooth Password (passkey). The passkey should be indicated in your headset's user guide.



The following indicates methods for connecting your S750/S750i with your headset. To use the headset for making or receiving a call, you need to turn on the headset and activate Bluetooth pairing mode before trying to establish a connection. Before proceeding to “Using the Bluetooth headset for making or receiving a call” please read the following on how to connect the S750/S750i with your headset.


Connecting your S750/S750i with the headset



There is more than one way to establish a connection. We recommend you first register the device to the connection list before proceeding. (See previous page). Refer to your headset’s user guide for further details regarding connection list registration, connection activation and other operations.

(A) Connecting from the S750/S750i to your headset

1. Activate Bluetooth pairing mode on your headset to start connection.
2. From your S750/S750i Standby display, press **OK** → **Bluetooth** → **Connect to Hands-free**
3. If your headset is already in the connection list, select it from the list and press OK. Otherwise, Press the left soft key [Search], select your headset and press OK to connect.

(B) Connecting from your headset to the S750/S750i

1. On your S750/S750i, switch Bluetooth mode on
 - Press and hold OK from the Standby display.
2. When you see the  icon on your S750/S750i, turn the headset on and activate the connection. Enter the Bluetooth Password (passkey) if prompted. Read your headset’s user guide on how to activate the connection.

Note : If you have gone out of range (approx. 10 m), and the connection is lost, you can re-establish the connection by coming back within the connectable range, confirming the  icon is displayed on your S750/S750i, and in the case automatic connection does not occur at this point, re-activate the connection from the headset. (Check your headset’s user guide on how to operate) Note that your Bluetooth Visibility setting must be set to Always Visible (default setting), or Visible for 3 Min., otherwise the  icon will not appear. (Refer to your S750/S750i’s user guide for further details on Visibility.)

Using the Bluetooth headset for making or receiving a call

Making a call after pairing and connection established

1. Connect your S750/S750i with the headset. (Refer to “Connecting your S750/S750i with the headset.”)
2. Make a call using your S750/S750i.

Note : You may be able to make a call using the headset to your last redialed phone number. Read your headset’s user guide for details on how to make calls using the headset.

Receiving a call after pairing and connection established


1. Make sure to pair and connect your S750/S750i with the headset before receiving or making a call using the headset. (See above "Connecting your S750/S750i with the headset.")
2. Receive a call on the headset (refer to your headset's user guide for operation)

Note : If you want to use your headset after receiving a call on your S750/S750i, press [Options], select **Connect to Bluetooth** and press OK.

Receiving or making a call when connection has not been established

You can activate your Bluetooth headset after receiving or making a call.

Note : Make sure that you have at least paired and connected your headset with your phone once in the past and the headset is in your phone's Connection List, otherwise you will not be able to connect them after receiving or making a call.

1. From your phone, switch Bluetooth mode on prior to receiving or making the call.
2. Make sure the  icon is displayed before making or receiving a call.
3. Make or receive a call on your phone.
4. Connect to your phone from the headset via Bluetooth. The method of connecting from your headset to your phone may differ depending on the headset. Refer to your headset's user guide for details.
5. Press [Options], select **Connect to Bluetooth** and press OK on your phone to switch to the headset, then begin using your headset.

Note : The content of this guide is subject to change without notice.